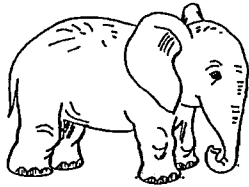


Can you find these animals at the Maryland Zoo?

Elephant



Elephants like to use their trunk like a hand. They can use their trunk to eat, drink, breathe and smell. They can use it to lift or push heavy objects.

Can you use your nose like a hand?

Polar Bear



Polar bears live on the tundra. In the winter, it is very cold and snowy but in the summer, the tundra has grass and wildflowers. Polar Bears like to sleep a lot.

Is the polar bear asleep or awake?

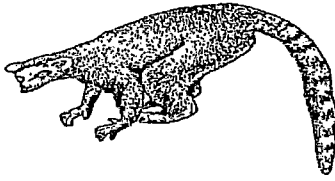
Penguins



The penguins at the zoo are African penguins. They do not live where it is icy and snowy. They live in a warm climate and like to spend time on land as well as swim in the water.

If you were a penguin, would you like to live where it is cold or warm. Why?

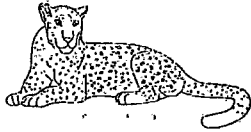
Lemur



Lemurs live in forests in the country of Madagascar. They leap from tree to tree or along the ground.

Do you think it is faster to walk or leap through the zoo?
Which would you rather do?

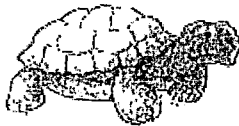
Leopard



Leopards are great climbers. They hang their food up high on tree branches to keep it away from other animals. Their favorite places to rest are on the rocks, behind the tree or in the corner of the exhibit.

Where is the leopard resting today?

Tortoise



The tortoise's shell helps protect it. Sometimes they blend in so well, they look like rocks. The tortoise has strong legs to help it walk on land.

Does the tortoise move fast or slow?

Zebra



A zebra is a mammal. Mammals are animals that have hair. Zebras can be very shy so sometimes they run back inside.

Is the zebra being shy today?